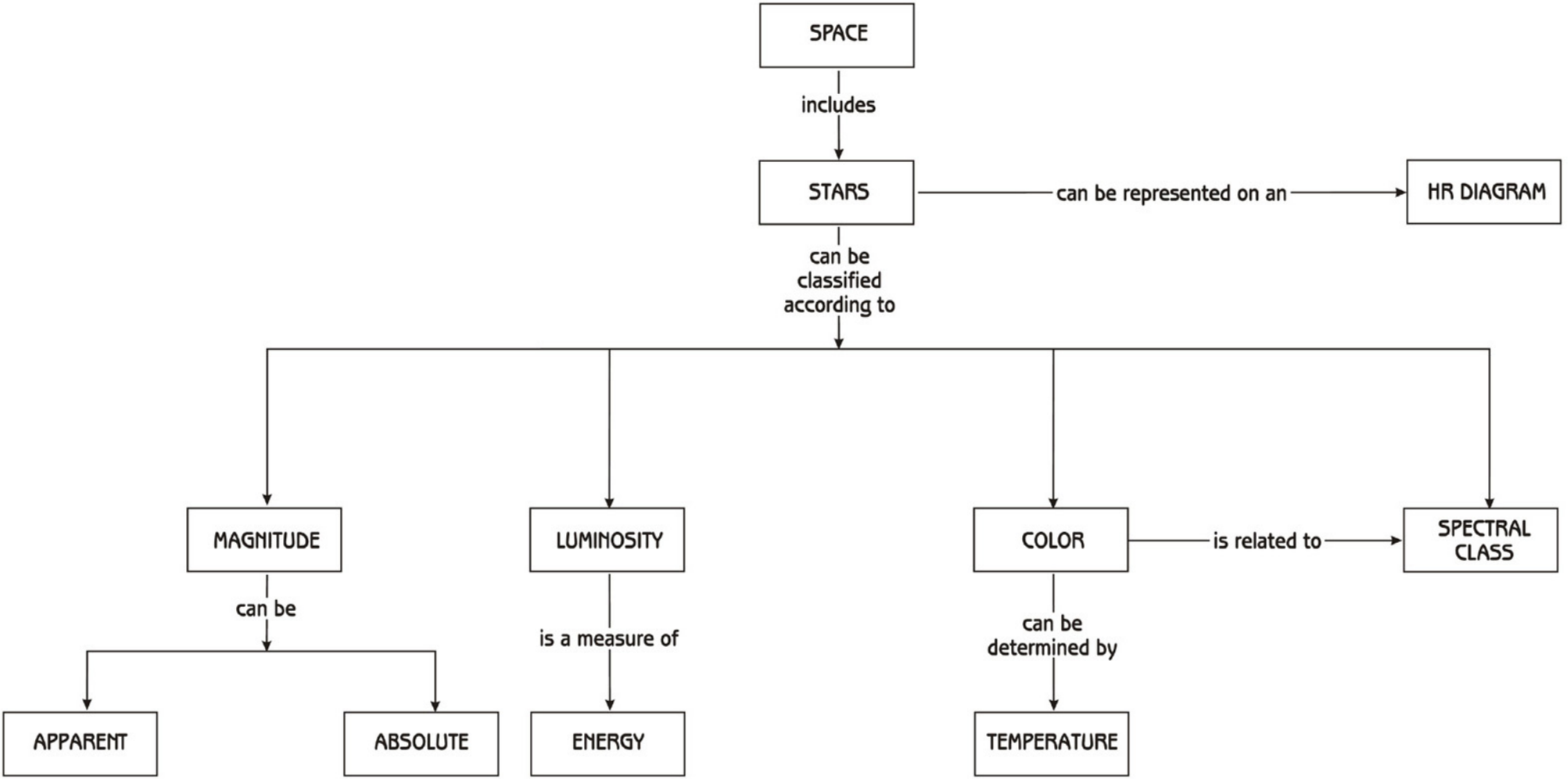


SPACE





STARS

are described by their

give off their own

ENERGY

BRIGHTNESS

COLOR

SIZE

go through a

LIFE CYCLE

is a by-product of

NUCLEAR FUSION

is described in terms of

LUMINOSITY

is used to determine

TEMPERATURE

CHEMICAL COMPOSITION

represents

AGE

is organized and represented by

HERTZSPRUNG-RUSSELL DIAGRAM

begins with

COMPRESSION OF BLACK HOLES

ends in

SUPERNOVA

occurs when

ATOMS OF HYDROGEN ARE STRIPPED OF PROTONS

produce

RADIATION

result in the formation of

HELIUM

is determined by

ORIGINAL MASS

indicates

starts with

MAIN SEQUENCE

collapses to form

SURFACE TEMPERATURE

MAGNITUDE (BRIGHTNESS)

HOTTEST

MEDIUM

COOLEST

BLUE OR BLUE-WHITE STARS (BRIGHTEST)

YELLOW STARS

RED STARS (LEAST BRIGHT)

is directly proportional to

are directly related

are directly related

are directly related

include

includes

can vary between